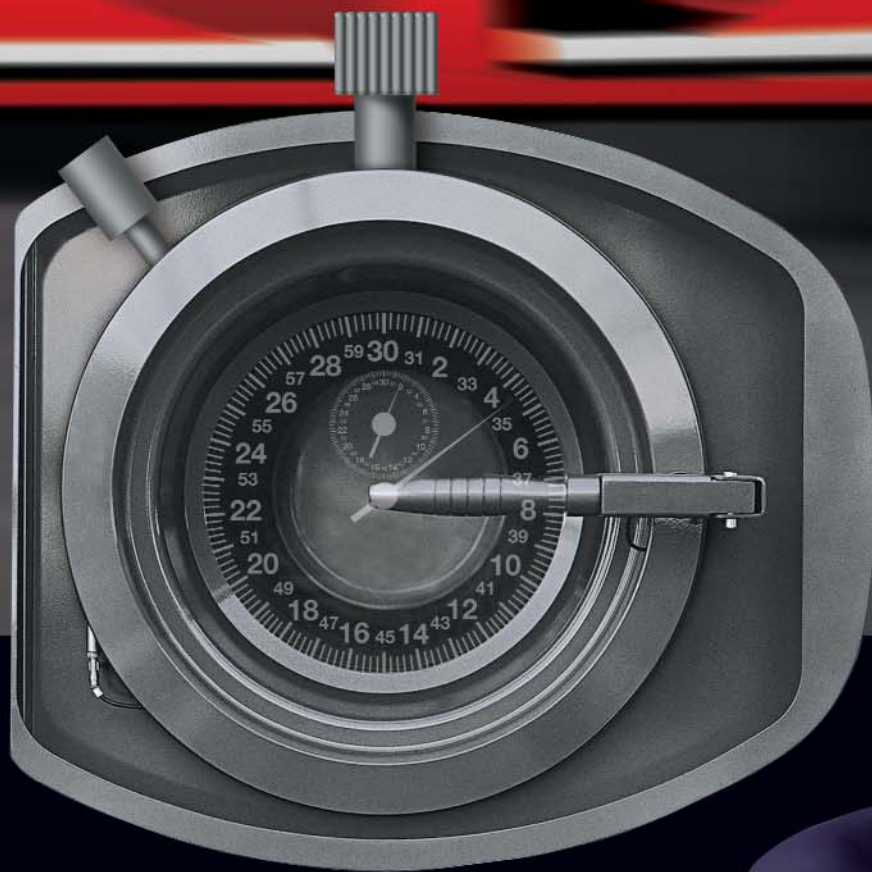


Fast. Smart. Clean.



UNION L&P 800 SERIES U-2000

UNION SERIES L&P U2000



The Ideal Drycleaning System



We know what it takes to be First.



Since its inception in 1976, Union has been the benchmark by which all other drycleaning systems are measured.

We lead the field in high-quality design and construction, incorporating continual advances in technology made possible by the industry's most creative and visionary research team.

The vast Union complex incorporates manufacturing and assembly plants housing state-of-the-art research and development, high-tech inspection and CAD-based design facilities.

Over 80% of machine components are made in-house to assure you the highest level of quality control in every Union product.

Today, Union drycleaning machines can be found in over 60 countries, sold and serviced by more than 275 factory-authorized dealers worldwide.

To keep abreast of the latest advances in product technology, Union sponsors periodic technical seminars and training courses for service personnel and drycleaners alike.

At Union, we know what it takes to be first...and how to help your business be first at the finish line in drycleaning profits!

A HISTORY

QUALITY

TECHNOLOGY

RESEARCH

INNOVATION

SAFETY

The 800 Series



The ideal drycleaning systems

The result of Union's three-decade leadership in the drycleaning industry is an unprecedented level of innovation and safety you'll find in the new 800 Series...innovation and safety that translates into faster production, lower energy and maintenance costs, easier operation and ecologically superior performance. From the innovative Dialog Plus™ computer brain to advanced Idromatic™ environmentally safe still cleaning, the Union 800 Series gives new meaning to the words Fast, Smart and Clean.

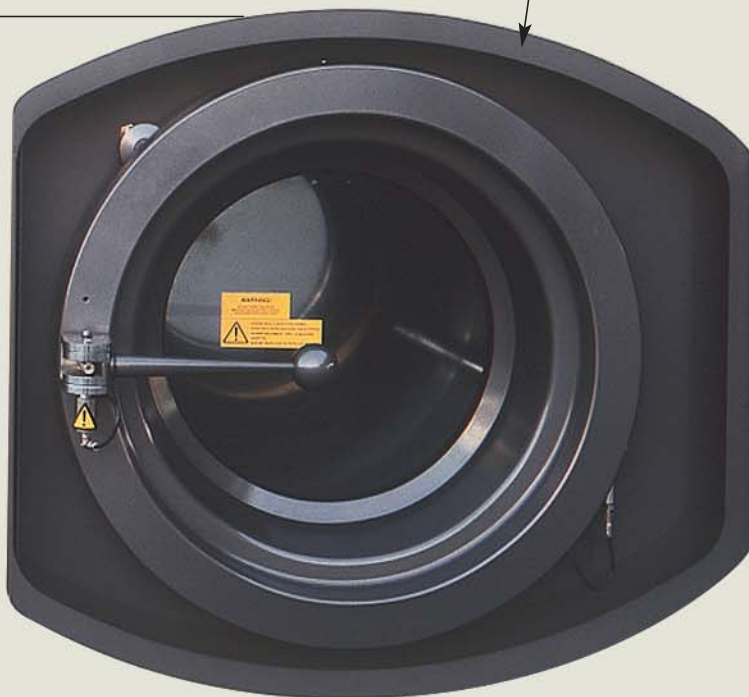
Whichever size and model you choose from the new Union 800 Series, it will be the ideal drycleaning system for you.



Advanced Technology for Greater Performance.

Our new Dialog Computer has 20 factory-set programs to handle virtually every need, yet can be customized on-site thanks to simple-write manual overrides. All system functions and program controls appear in the easy-to-read, quick-access call-up menu panel. The displays continuously monitor and show solvent temperature, outlet air temperature and inlet air temperature. Exclusive Maintenance Man™ feature keeps accurate, progressive accounts of operation performance and routine maintenance on a time/day/date basis. All data can be retrieved and logged into any PC desktop or laptop personal computer for easy record keeping.

Extra-large loading door features computer-controlled PosiSeal™ lock which prevents door opening until final cycle is completed and all vapor has been removed from the system. Newly designed Cyclonic Airflo™ basket maximizes temperature-controlled air throughout the load for faster, more efficient drying and cool-down. It also features automatic back-plate washdown and residual lint removal. New rim design keeps buttons and other objects from getting lodged between the door and inside rim.



All new Union L800 Series Systems feature up-front filter and temperature gauges for easy reading, front-access to primary controls and components, and illuminated sightglasses in strategic locations for quick visual inspection.



Union Unleashes The Brain!

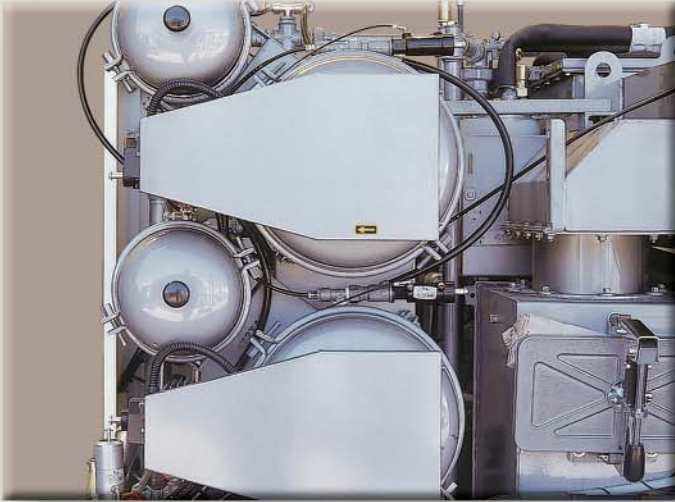
Dialog Plus™ is the latest advance in computerized operation technology for drycleaning. And it is standard on every new Union 800 Series System! With Dialog Plus™ you can run different multiple programs without having to change temperature settings.

Once the individual programs are entered, Dialog Plus™ automatically remembers the settings for you. So you can run a regular cleaning cycle with standard temperatures, then switch to a "delicates program" with lower solvent and drying temperature with no adjustment to settings. Dialog Plus™ also allows individual control for solvent, inlet and outlet air temperatures for each step in the cycle, and monitors and displays all temperatures in the system, including distilled solvent temperature and evaporator temperature.

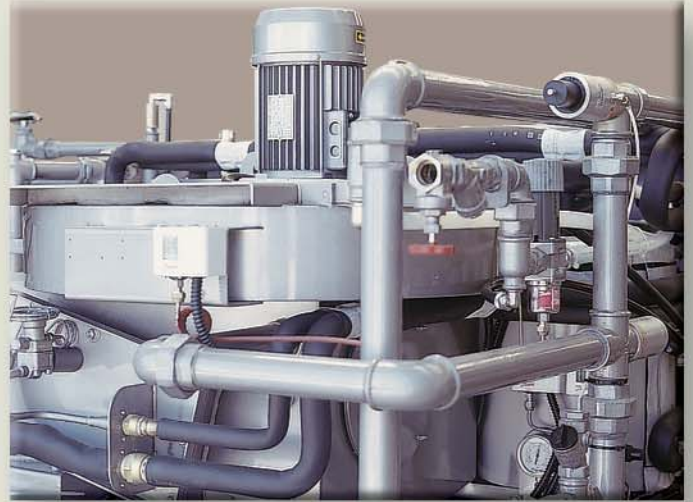
It even pauses a cycle until the correct temperature for operation is attained, automatically controls soap and additive injections, and lets you quickly and simply modify or enlarge any segment of the program in use.

That's why we call it The Brain. You'll call it Indispensable!

Advanced Technology for Greater Performance.



Multiple, independently functioning high-micron self-cleaning spin disc EcoFilters and large-capacity carbon cartridge filters are available on all Union 800 Series Systems to assure optimum filtration of both large and small particles for maximum solvent purity. Computer controls automatically pair filter operation for whites, darks or colors according to specific programs.



New, oversized Turbo 2™ Fan cuts drying time by up to 10 minutes compared to previous models. Easy-to-read digital display panels show still bottom temperature control, cold air temperature, air inlet temperature for the Recuperator, and still water control. The refrigeration unit is divided into separate segments for simplified maintenance and reduced downtime.

Compressor, refrigeration coil, and heat-exchange coil can be individually serviced without removing the entire system. Sealed coils plus quick disconnects prevent freon discharge. Saves energy and reduces operating costs.

Union's Idromatic™ Still Cleaning System completely removes sludge, lets you scrape* still interior walls and floor, then automatically pumps out all residue for containerization and safe disposal...all without opening the still door so there is never any exposure to solvent fumes or waste. The still is then automatically sprayed with a fine jet of reclaimed solvent to assure a totally cleaned and purified chamber prior to refill. *Scraper not available on SlimSpace™ models.

The new Union 800 Series U-2000 Systems are now equipped with the Recuperator built into the mainframe of the machine, creating a much smaller footprint taking up less floor space. Any low concentration of solvent fumes or odors that may have remained in the system are removed and exchanged for clean air before the basket door can be opened. Helps increase solvent mileage and lowers percc costs.



The Ideal Drycleaning System

UNION P-840, P-850, P860 SlimSpace FAST. SMART. CLEAN.



High cleaning quality, best performances as far as consumptions and ecology is concerned.

Models UNION P840 (18 kg) P850 (25 kg) P860 (25 kg) are the perfect primary drycleaning systems for plants with limited floor space and as auxiliary units for adding extra cleaning capacity.

Still with level sensor in order to prevent foam forming during the distillation process.

I.T.D.S. (Ideal Tunnel Drying System) the new quick drying system, equipped with drying times electronic control DRY CONTROL, which does not require any periodic maintenance.

Large loading door, Computer DIALOG with expansion unit DIALOG PLUS for visualizing contemporarily the operating temperatures. All models of the series UNION P840, P850 and P860 are equipped with two independently controlled solvent tanks with slanted base and sight glasses. All electric and electronic components are ETL certified for USA and Canada and CE for the European Community. These models can be supplied with the still automatic cleaning system STILL MATIC

All Union SlimSpace systems pack in all the high-performance and exclusive features in a more compact size with a narrower, slim footprint.



The Ideal Drycleaning System

UNION L-840 FAST. SMART. CLEAN.



Exceptional cleaning, economy and ecological performance in a 18 Kg. load capacity model. Logical, ergonomically designed for convenient, easy access to all components for quick maintenance.

Multiple, independent spin disc EcoFilters™ and carbon cartridge filters. Convenient access to oversized double lint filters and button trap. Extra-large Turbo 2™ Fan. Dialog™ Computer with Dialog Plus™. Two-stage gravitational water separator with sightglass. Modular designed refrigeration system. Built-in Recuper U-2000™.

Idromatic™ Still Cleaning System. Quick disconnect hoses. Easily accessible piping, fittings and quick cut-off valves. High-efficiency pumps. Industrial grade stainless steel and brass in all critical areas.

Still overflow protection and heavy-duty steel containment base. 24-volt computer circuitry. ETL-listed for USA and Canada or CE for European countries.



The Ideal Drycleaning System

UNION L-850, L-860 FAST. SMART. CLEAN.



Exceptional cleaning , economy and ecological performance in 20 and 25 Kg. load capacities. Large-access loading door. Cyclonic Airflo™ basket. Dialog™ Computer with Dialog Plus™. Front digital solvent/air temperature display panels.

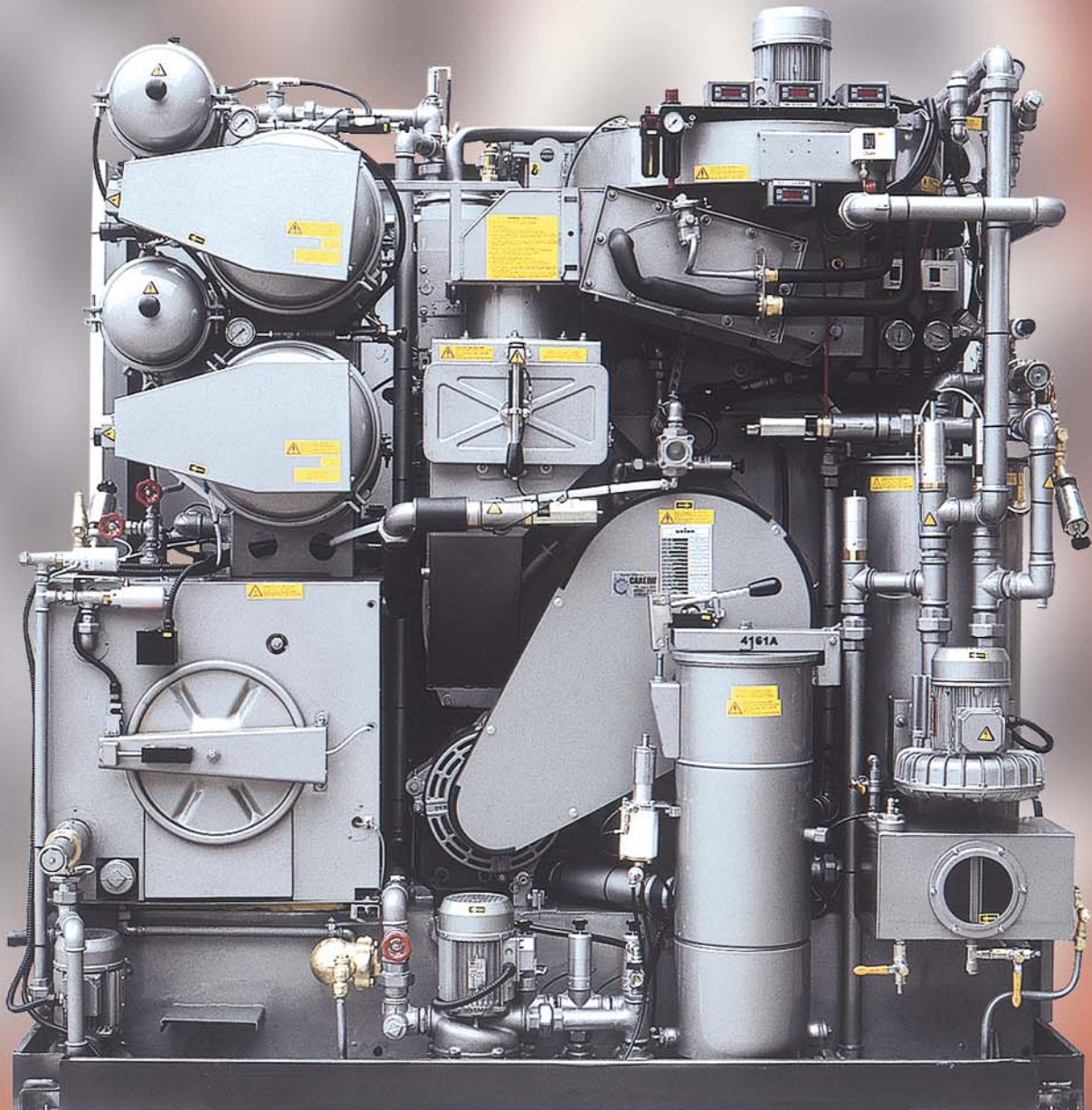
Front analog filter gauges. Easy front access to electronics, computer and still control components. Front still scraper access door. Illuminated front sightglasses for still and basket solvent washdown inlet. Three independently controlled solvent holding/transfer tanks with slanted base and illuminated sightglasses. 24-volt computer control circuitry.

All electronic components are ETL-listed for USA and Canada or CE for European countries.



The Ideal Drycleaning System

UNION L-850, L-860 FAST. SMART. CLEAN.



Logical, ergonomically designed for convenient, easy access to all components for quick maintenance.

Multiple, independent spin disc Eco-Filters™ and carbon cartridge filters.

Convenient access to oversized double lint filters and button trap. Extra-large Turbo 2™ Fan. Two-stage gravitational water separator with sightglass. Modular designed refrigeration system. Built-in Recuper U-2000™.

Idromatic™ Still Cleaning System. Quick disconnect hoses. Easily accessible piping, fittings and quick cut-off valves. High-efficiency pumps. Industrial grade stainless steel and brass in all critical areas.

Still overflow protection and heavy-duty steel containment base.



The Ideal Drycleaning System

UNION L-880, L-890 FAST. SMART. CLEAN.



Exceptional cleaning, economy and ecological performance in 32 - and 40-Kg. load capacities.

Large-access loading door. Cyclonic Airflo™ basket. Dialog™ Computer with Dialog Plus™.

Front digital solvent/air temperature display panels. Front analog filter gauges.

Easy front access to electronics, computer and still control components.

Front still scraper access door. Illuminated front sightglasses for still and basket solvent washdown inlet.

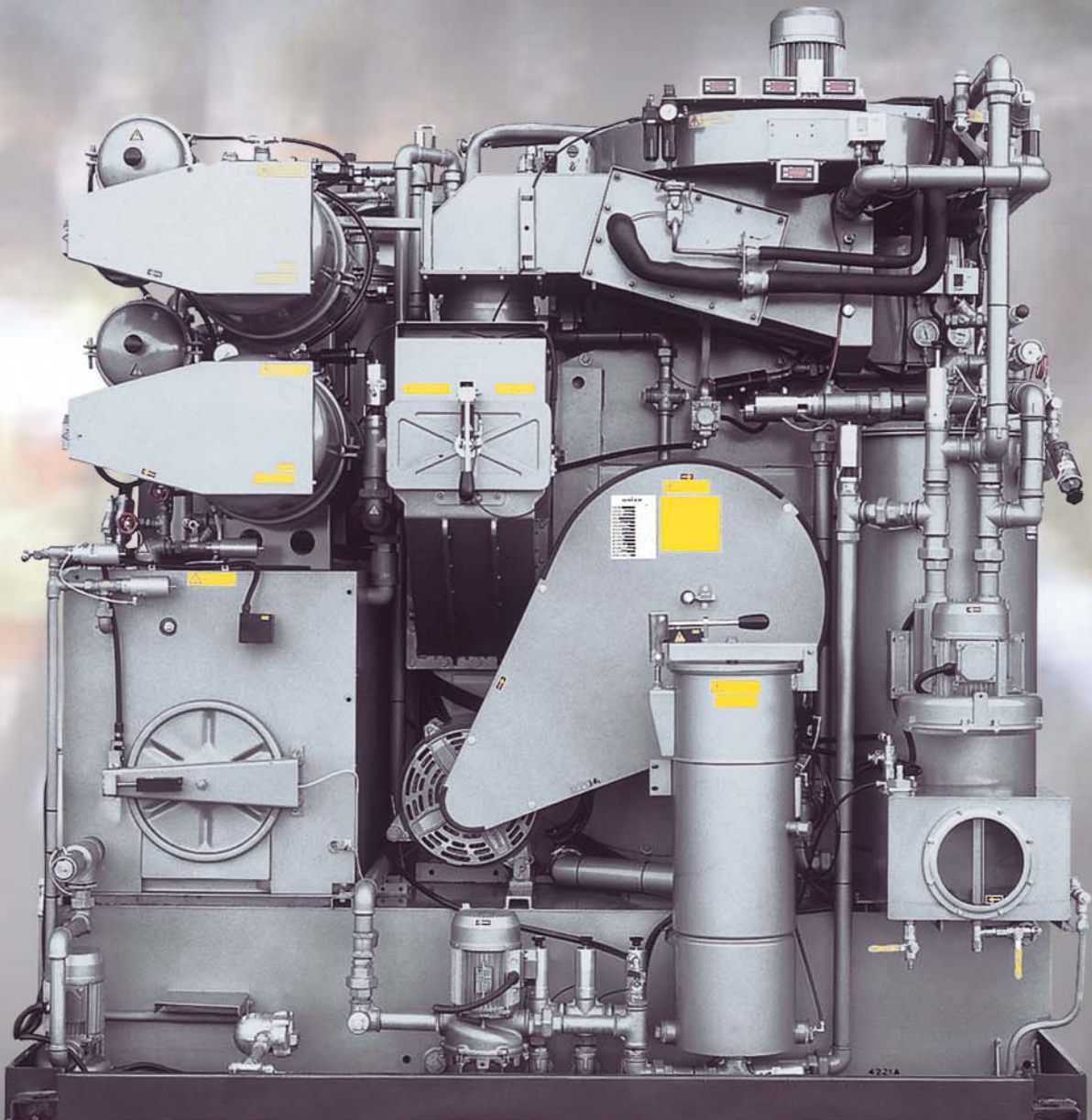
Three independently controlled solvent holding/transfer tanks with slanted base and illuminated sightglasses.

24-volt computer circuitry. All electronic components are ETL-listed for USA and Canada or CE for European countries.



The Ideal Drycleaning System

UNION L-880, L-890 FAST. SMART. CLEAN.



Logical, ergonomically designed for convenient, easy access to all components for quick maintenance.

Multiple, independent spin disc EcoFilters™ and carbon cartridge filters.

Convenient access to oversized double lint filters and button trap. Extra-large Turbo 2™ Fan. Two-stage gravitational water separator with sightglass. Modular designed refrigeration system. Built-in Recuper U-2000™. Idromatic™ Still Cleaning System. Quick disconnect hoses. Easily accessible piping, fittings and quick cut-off valves. High-efficiency pumps. Industrial grade stainless steel and brass in all critical areas.

Still overflow protection and heavy-duty steel containment base.



The Ideal Drycleaning System

Technical features:

		P840	P850	P860	L840	L850	L860	L880	L890
LOAD CAPACITY (Ratio 1:20)	Kg	18	20	25	18	20	25	32	40
BASKET									
Volume	lt	340	400	500	340	400	500	645	800
Diameter	mm	900	1000	1000	900	1000	1000	1200	1200
Depth	mm	535	510	640	535	510	640	570	710
Wash speed	rpm	40	33	33	40	33	33	28	28
Extract speed	rpm	400	336	336	400	336	336	165 ÷ 340	165 ÷ 340
Door opening	mm	500	500	500	500	500	500	500	600
TANKS									
Useful volume tank 1	lt	95	110	120	110	160	160	240	240
Useful volume tank 2	lt	150	165	180	110	160	160	240	240
Useful volume tank 3	lt	-	-	-	200	200	200	330	330
STILL									
Useful Still Volume at half inspection	lt	190	190	190	190	260	260	360	360
Total Still Volume	lt	225	225	225	230	325	325	455	455
NYLON FILTER									
Volume nylon filter housing	lt	55	55	55	55	75	75	75	100
Nylon filter area	mt ²	3.9	3.9	3.9	3.9	5.5	5.5	5.5	7.8
Filter disks	nr	26	26	26	26	39	39	39	52
PURITAN FILTER									
Volume Puritan filter housing	lt	13	13	13	25	25	25	25	25
Tubes number	nr	1	1	1	1	1	1	1	1
Cartridges quantity	nr	1	1	1	2	2	2	2	2
DUAL CARTRIDGE FILTER									
Volume Dual cartridge filter housing	lt	55	55	55	55	85	85	85	105
Tubes number	nr	1	1	1	1	1	1	1	1
Cartridges quantity	nr	2	2	2	2	3	3	3	4
ELECTRIC POWER									
Working power (ELECTRIC MACHINE)	Kw	25.5	27	28.4 ÷ 31.4	25.5	31	31	-	-
Wash/Extract motor	Kw	0.60 ÷ 2.2	0.75 ÷ 3	0.75 ÷ 3	0.60 ÷ 2.2	0.75 ÷ 3	0.75 ÷ 3	1.9 ÷ 4.5 ÷ 6.1	9 ÷ 4.5 ÷ 6
Solvent pump motor	Kw	0.75	0.75	0.75	0.75	0.75	0.75	1.1	1.1
Fan motor	Kw	2.2	2.2	2.2	2.2	2.2	2.2	2.2	2.2
Refrigerator compressor	Kw	3.75	4.85	4.85	3.75	4.85	4.85	4.85	4.85
Heating elements with Turbo Still	Kw	9	9	9	9	9	-	-	-
Still electric elements	Kw	9	9	9	7.5	13.5	13.5	-	-
Steam Boiler Working	BHP	2.5	3	3	2.5	3	3	3.5	3.75
Working power (STEAM MACHINE)	Kw	7.5	9	9	7.5	9	9	10	10
CONNECTIONS SUPPLY									
Compressed air inlet	mm	6	6	6	6	6	6	6	6
Cooling water inlet	Ø	1"	1"	1"	1"	1"	1"	1" ÷ 3/4"	1" ÷ 3/4"
Cooling water outlet	Ø	1"	1"	1"	1"	1"	1"	1" ÷ 3/4"	1" ÷ 3/4"
Steam still and heater inlet	Ø	1/2"	1/2"	1/2"	1/2"	1/2"	1/2"	1/2"	1/2"
Condensate still and heater outlet	Ø	1/2"	1/2"	1/2"	1/2"	1/2"	1/2"	1/2"	1/2"
MACHINE WEIGHTS REGULAR Version									
Empty machine weight	Kg	1510	1775	1855	1620	1960	2070	2745	2855
Machine weight with solvent	Kg	2015	2325	2405	2550	3110	3220	4440	4550
Static charge on the floor with solvent	Kg/mt ²	746	825	830	825	835	865	930	950
Dynamic charge on the floor (+10%)	Kg/mt ²	1002	1060	1090	1065	1033	1095	1200	1265
Packaged machine weight	Kg	1625	1995	2075	1900	2240	2350	3030	3140
MACHINE WEIGHTS U2000 Version									
Empty machine weight	Kg	1690	1890	1970	1852	2310	2365	3185	3295
Machine weight with solvent	Kg	2195	2440	2520	2780	3460	3515	4880	4990
Static charge on the floor whit solvent	Kg/mt ²	813	865	865	897	929	944	1020	1045
Dynamic charge on the floor (+10%)	Kg/mt ²	1075	1340	1135	1145	1136	1181	1300	1370
Packaged machine weight	Kg	1800	2110	2190	2180	2490	2535	3470	3580
MACHINE DIMENSIONS									
(A) Width front Machine	mm	1250	1300	1300	2000	2140	2140	2360	2360
(B) Depth	mm	2160	2170	2300	1550	1740	1740	2025	2025
(C) Height With Fan	mm	2210	2340	2340	2195	2285	2285	2580	2580
(D) Height Without Fan	mm	2040	2095	2095	2025	2095	2095	2345	2345

Note: Acoustic emission level of the machines is lower than 70 dB (A)

All specifications, appearance and model numbers are subject to change without notice.



UNION s.p.a.
 40010 Sala Bolognese (Bologna) ITALY
 Via Labriola 4/D
 Tel.: (+39) 051.6814996 - Fax: (+39) 051.6814660
 E-mail; union@union.stm.it
 Web page; www.union.stm.it